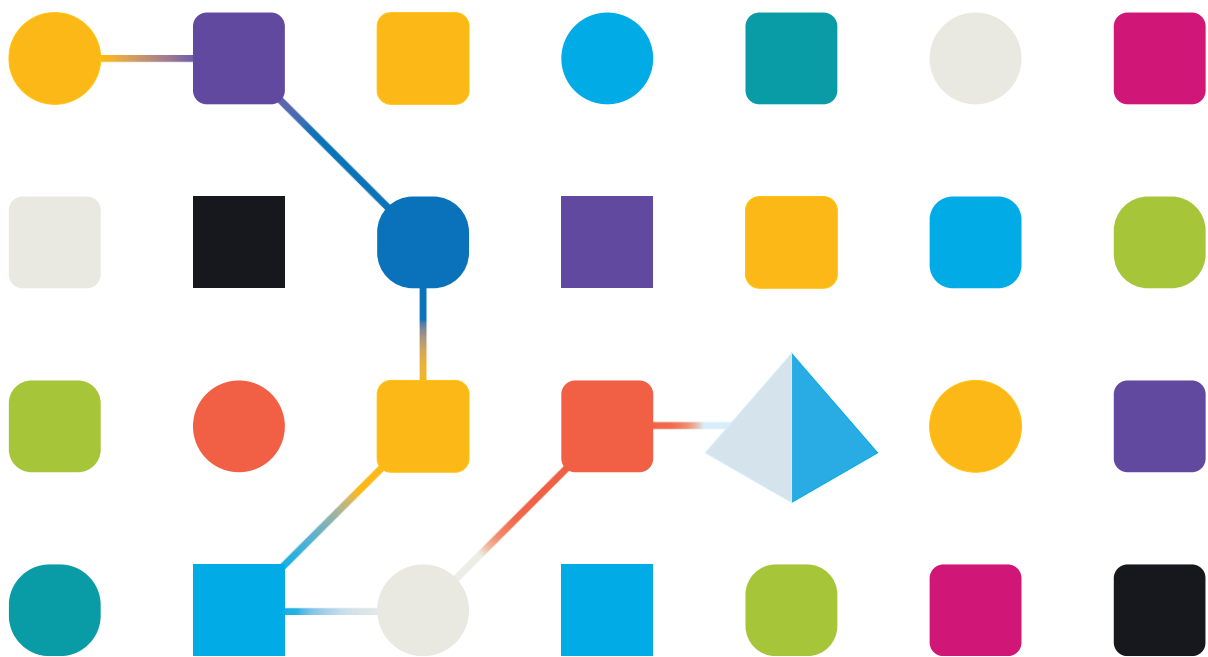




SS&C | Blue Prism® Solution Designer Certification Handbook

Document Revision 1.0



Trademarks and copyright

The information contained in this document is the proprietary and confidential information of SS&C Blue Prism and should not be disclosed to a third party without the written consent of an authorized SS&C Blue Prism representative. No part of this document may be reproduced or transmitted in any form or by any means, electronic or mechanical, including photocopying without the written permission of SS&C Blue Prism. All trademarks are hereby acknowledged and are used to the benefit of their respective owners. SS&C Blue Prism and its affiliates are not responsible for the content of external websites referenced by this document.

SS&C | Blue Prism®, 2 Cinnamon Park, Crab Lane, Warrington, WA2 0XP, United Kingdom.
Registered in England: Reg. No. 4260035. Tel: +44 370 879 3000. Web: www.blueprism.com

© 2022 “SS&C | Blue Prism®”, “SS&C Blue Prism”. “Blue Prism,” the “Blue Prism” logo and Prism device are either trademarks or registered trademarks of SS&C | Blue Prism®, and its affiliates. All Rights Reserved.

Contents

- Introduction 4
 - Target Candidates..... 4
 - Badging 4
 - Registration and Scheduling..... 4
- Solution Designer Certification Exam Preparation 5
 - Training Courses 5
 - Prerequisite..... 5
 - Certification 5
- Exam Content Outline 6
 - Objective 1: Best Practice for Building Objects and Processes..... 6
 - Objective 2: Exception Handling..... 6
 - Objective 3: Debugging..... 6
 - Objective 4: Web Services – Exposing and Consuming 6
 - Objective 5: Work Queues..... 6
 - Objective 6: General Items 6
- Exam Details 7

Introduction

The SS&C | Blue Prism® Solution Designer Certification is for experienced developers who focus on analysing processes in detail to capture all the business steps in solution designs. The exam is aimed at SS&C | Blue Prism® Developers' understanding and development of reliable, scalable, secure, and efficient SS&C | Blue Prism® solution designs and best practices. The SS&C | Blue Prism® Solution Designer Certification will not only test the development skills of the candidate, but their ability to troubleshoot and debug existing automations.

It is an internationally recognized certification that identifies the individual as possessing the skills of a SS&C | Blue Prism® Solution Designer. Getting certified empowers the individual to distinguish themselves from the competition and increases marketability.

Target Candidates

The target candidates are developers who have already passed the SS&C | Blue Prism® Developer exam. Candidates should have experience in working and communicating with various parts of the business to define detailed and exact requirements for solution design. Candidate should have experience analysing the Process Definition Documents (PDD) in detail to capture all the business process steps in solution designs and consider accompanying factors such as recoverability, scalability, reusability, security, resilience, and case management. Candidates should be able to ensure solution designs meet all requirements that adhere to SS&C | Blue Prism® best practices.

The target candidates could hold a role in a robotic automation environment, including but not limited to, developer, lead developer, technical support or business/process analyst. The candidate should have accumulated at least 6 months of hands-on SS&C | Blue Prism® Automation Design, Development and Quality Assurance, as this test is primarily focused on day-to-day, practical skills and assessment. Successful candidates should be very comfortable in reviewing and assessing designs from both a Process and Object perspective.

A qualified candidate could be an individual who:

- Pass the SS&C | Blue Prism® Developer exam (Prerequisite)

- AND -

- Six months of hands-on design and development experience is strongly recommended

Badging

SS&C Blue Prism is in a partnership with Credly and awards digital badges to individuals who successfully pass the SS&C | Blue Prism® Solution Designer exam. If you successfully pass your exam, you will receive an email notification from Credly with instructions for claiming your badge and setting up your account. Digital Credly badges help earners promote their achievements. Visit the [Frequently Asked Questions](#) site for further information about digital badging.

Registration and Scheduling

To schedule the SS&C | Blue Prism® Solution Designer exam, please visit [Pearson Vue website](#) or visit the [Frequently Asked Questions](#) site for further information about registering and scheduling an exam online* or at a test centre.

* When you book the online exam, select the exam ending in `_OP` for the online version of the exam.

Solution Designer Certification Exam Preparation

Training Courses

To prepare for the SS&C | Blue Prism® Solution Designer Certification exam, completing the following training courses and studying the Website Services user guide are strongly recommended:

- [Blue Prism® Solution Design Overview](#)
- [Blue Prism® Advanced Work Queues](#)
- [Blue Prism® v5 User Guide - Web Services](#) or [v6 User Guide - Web Services](#)

- OR -

- SS&C Blue Prism courses at a [SS&C | Blue Prism® Accredited Training Partner](#)

Prerequisite

Candidates need to pass the SS&C | Blue Prism® Developer exam first to be qualified to apply for the SS&C | Blue Prism® Solution Designer exam. Although there is no timeframe between taking the two exams, gaining six months of hands-on design and development experience after passing the Developer exam is strongly recommended.

Certification

Once SS&C | Blue Prism® Developer Certification is obtained and all the training courses are complete, a candidate is prepared for the SS&C | Blue Prism® Solution Designer exam. The exam is delivered either in a Pearson VUE test Center or online and consists of 27 questions with some scenario-based questions.

A score of 70% is required by the candidate to pass.

Exam Content Outline

Objective 1: Best Practice for Building Objects and Processes

Objective 2: Exception Handling

Objective 3: Debugging

Objective 4: Web Services – Exposing and Consuming

Objective 5: Work Queues

Objective 6: General Items

Exam Details

Document Title	Description
Certification Name	SS&C Blue Prism® Certified Solution Designer
Pre-requisites	Certified SS&C Blue Prism® Developer
Number of Questions	27
Language	English, Japanese, Simplified Chinese <i>* Non-English exam is only available at test centre</i>
Exam Duration	60 Minutes <i>* Candidates from countries where English is not an official language may be awarded an extra 30 minutes.</i>
Passing Score	70%
Exam Fee	USD\$150 except for the following countries: Gibraltar, Guernsey, Isle of Man, Jersey, United Kingdom: GBP£120 Andorra, Austria, Belgium, Cyprus, Estonia, Finland, France, Germany, Greece, Ireland, Italy, Latvia, Liechtenstien, Lithuania, Luxembourg, Malta, Monaco, Netherlands, Portugal, San Marino, Slovakia, Slovenia, Spain, Vatican City State: EUR€135 Japan: JPY¥16,000